

IEC Power Devices

IEC Contactors

C-2000

Nonreversing and Reversing

AC Controlled, 3-Pole

HP Ratings AC-3 Duty

Section 5



5-75 Hp (460V) Nonreversing Standard Terminals

Maximum Current @ 460 V (A) AC-3	1-Phase HP @60 Hz, 115V	1-Phase HP @60 Hz, 230V	3-Phase HP @60 Hz, 200V	3-Phase HP @60 Hz, 230V	3-Phase HP @60 Hz, 460V	3-Phase HP @60 Hz, 575V	kW @ 50 Hz, 380/415V	Auxiliary Contacts	Product Number ¹
10A	0.5	1.5	3	3	5	7.5	4	1NO	CL00A310T*
13.8A	0.75	2	3	3	7.5	10	5.5	1NO	CL01A310T*
17.5A	1	3	5	5	10	15	7.5	1NO	CL02A310T*
22A	1.5	3	5	7.5	15	15	11	1NO	CL25A310T*
32A	2	5	10	10	20	25	16	1NO	CL04A310M*
34A	3	5	10	10	25	25	18.5	1NO	CL45A310M*
48A	3	7.5	15	15	30	40	22	1NO-1NC	CL06A311M*
62A	5	10	20	20	40	50	30	1NO-1NC	CL07A311M*
68A	5	15	20	25	50	60	37	1NO-1NC	CL08A311M*
80A	7.5	15	25	30	60	75	45	1NO-1NC	CL09A311M*
96A	10	20	30	40	75	75	55	1NO-1NC	CL10A311M*

¹To complete the contactor product number, replace * in the product number with the appropriate digit from the Coil Selection table.

5-10 Hp (460V) Nonreversing with Ring Terminal Capacity

Maximum Current @ 460 V (A) AC-3	1-Phase HP @60 Hz, 115V	1-Phase HP @60 Hz, 230V	3-Phase HP @60 Hz, 200V	3-Phase HP @60 Hz, 230V	3-Phase HP @60 Hz, 460V	3-Phase HP @60 Hz, 575V	kW @ 50 Hz, 380/415V	Auxiliary Contacts	Product Number ¹
10A	0.5	1.5	3	3	5	7.5	4	1NO	CL00A310R*
13.8A	0.75	2	3	3	7.5	10	5.5	1NO	CL01A310R*
17.5A	1	3	5	5	10	15	7.5	1NO	CL02A310R*

¹To complete the contactor product number, replace * in the product number with the appropriate digit from the Coil Selection table.

5-75 Hp (460V) Reversing Standard Terminals

Maximum Current @ 460 V (A) AC-3	1-Phase HP @60 Hz, 115V	1-Phase HP @60 Hz, 230V	3-Phase HP @60 Hz, 200V	3-Phase HP @60 Hz, 230V	3-Phase HP @60 Hz, 460V	3-Phase HP @60 Hz, 575V	kW @ 50 Hz, 380/415V	Auxiliary Contacts	Product Number ¹
10A	0.5	1.5	3	3	5	7.5	4	1NO	LAR00A*
13.8A	0.75	2	3	3	7.5	10	5.5	1NO	LAR01A*
17.5A	1	3	5	5	10	15	7.5	1NO	LAR02A*
22A	1.5	3	5	7.5	15	15	11	1NO	LAR25A*
32A	2	5	10	10	20	25	16	1NO	LAR04A*
34A	3	5	10	10	25	25	18.5	1NO	LAR45A*
48A	3	7.5	15	15	30	40	22	1NO-1NC	LAR06A*
62A	5	10	20	20	40	50	30	1NO-1NC	LAR07A*
68A	5	15	20	25	50	60	37	1NO-1NC	LAR08A*
80A	7.5	15	25	30	60	75	45	1NO-1NC	LAR09A*
96A	10	20	30	40	75	75	55	1NO-1NC	LAR10A*

¹To complete the contactor product number, replace * in the product number with the appropriate digit from the Coil Selection table.

(Replace asterisk (*) in product number with appropriate digit from table below.)

Coil Selection Table

AC Voltage 60 Hz	50 Hz	*Coil Suffix
24	24	1
48	42	F
120	110	J
208	—	L
277	220/230	N
240	—	S
480	380/400	U
—	415	W
600	500	Y



IEC Contactors

C-2000

Nonreversing and Reversing

DC Controlled, 3-Pole

HP Ratings AC-3 Duty

5-25 Hp (460V) Nonreversing Standard Terminals

Maximum Current @ 460 V (A) AC-3	1-Phase HP @60 Hz, 115V	1-Phase HP @60 Hz, 230V	3-Phase HP @60 Hz, 200V	3-Phase HP @60 Hz, 230V	3-Phase HP @60 Hz, 460V	3-Phase HP @60 Hz, 575V	kW @ 50 Hz, 380/415V	Auxiliary Contacts	Product Number ¹
10A	0.5	1.5	3	3	5	7.5	4	1NO	CL00D310T#
13.8A	0.75	2	3	3	7.5	10	5.5	1NO	CL01D310T#
17.5A	1	3	5	5	10	15	7.5	1NO	CL02D310T#
22A	1.5	3	5	7.5	15	15	11	1NO	CL25D310T#
32A	2	5	10	10	20	25	16	1NO	CL04D310M#
34A	3	5	10	10	25	25	18.5	1NO	CL45D310M#

¹To complete the contactor product number, replace the # in the product number with the appropriate digit from the Coil Selection table.

5-10 Hp (460V) Nonreversing with Ring Terminal Capacity

Maximum Current @ 460 V (A) AC-3	1-Phase HP @60 Hz, 115V	1-Phase HP @60 Hz, 230V	3-Phase HP @60 Hz, 200V	3-Phase HP @60 Hz, 230V	3-Phase HP @60 Hz, 460V	3-Phase HP @60 Hz, 575V	kW @ 50 Hz, 380/415V	Auxiliary Contacts	Product Number ¹
10A	0.5	1.5	3	3	5	7.5	4	1NO	CL00D310R#
13.8A	0.75	2	3	3	7.5	10	5.5	1NO	CL01D310R#
17.5A	1	3	5	5	10	15	7.5	1NO	CL02D310R#

¹To complete the contactor product number, replace the # in the product number with the appropriate digit from the Coil Selection table.

5-25 Hp (460V) Reversing³ Standard Terminals

Maximum Current @ 460 V (A) AC-3	1-Phase HP @60 Hz, 115V	1-Phase HP @60 Hz, 230V	3-Phase HP @60 Hz, 200V	3-Phase HP @60 Hz, 230V	3-Phase HP @60 Hz, 460V	3-Phase HP @60 Hz, 575V	kW @ 50 Hz, 380/415V	Auxiliary Contacts	Product Number ¹
10A	0.5	1.5	3	3	5	7.5	4	1NO	LDR00A#
13.8A	0.75	2	3	3	7.5	10	5.5	1NO	LDR01A#
17.5A	1	3	5	5	10	15	7.5	1NO	LDR02A#
22A	1.5	3	5	7.5	15	15	11	1NO	LDR25A#
32A	2	5	10	10	20	25	16	1NO	LDR04A#
34A	3	5	10	10	25	25	18.5	1NO	LDR45A#

¹To complete the contactor product number, replace the # in the product number with the appropriate digit from the Coil Selection table.

(Replace crosshatch (#) in product number with appropriate digit from table below.)

Coil Selection Table

(CL00, CL01, CL02, CL25, CL04, CL45)

DC Voltage	#Coil Suffix
12	B
24	D
48	G
125	K
250	T



IEC Contactors

C-2000

Nonreversing and Reversing

AC/DC Controlled, 3-Pole

HP Ratings AC-3 Duty

30-75 Hp (460V) Nonreversing Standard Terminals

Maximum Current @ 460 V (A) AC-3	1-Phase HP @60 Hz, 115V	1-Phase HP @60 Hz, 230V	3-Phase HP @60 Hz, 200V	3-Phase HP @60 Hz, 230V	3-Phase HP @60 Hz, 460V	3-Phase HP @60 Hz, 575V	kW @ 50 Hz, 380/415V	Auxiliary Contacts	Product Number ¹
48A	3	7.5	15	15	30	40	22	1NO 1NC	CL06E311M†
62A	5	10	20	20	40	50	30	1NO 1NC	CL07E311M†
68A	5	15	20	25	50	60	37	1NO 1NC	CL08E311M†
80A	7.5	15	25	30	60	75	45	1NO 1NC	CL09E311M†
96A	10	20	30	40	75	75	55	1NO 1NC	CL10E311M†

¹To complete the contactor product number, replace the † in the product number with the appropriate digit from the Coil Selection table.

30-75 Hp (460V) Reversing Standard Terminals

Maximum Current @ 460 V (A) AC-3	1-Phase HP @60 Hz, 115V	1-Phase HP @60 Hz, 230V	3-Phase HP @60 Hz, 200V	3-Phase HP @60 Hz, 230V	3-Phase HP @60 Hz, 460V	3-Phase HP @60 Hz, 575V	kW @ 50 Hz, 380/415V	Auxiliary Contacts	Product Number ¹
48A	3	7.5	15	15	30	40	22	1NO 1NC	LER06A†
62A	5	10	20	20	40	50	30	1NO 1NC	LER07A†
68A	5	15	20	25	50	60	37	1NO 1NC	LER08A†
80A	7.5	15	25	30	60	75	45	1NO 1NC	LER09A†
96A	10	20	30	40	75	75	55	1NO 1NC	LER10A†

¹To complete the contactor product number, replace the † in the product number with the appropriate digit from the Coil Selection table.

(Replace dagger (†) in product number with appropriate digit from table below.)

Coil Selection Table

(CL06, CL07, CL08, CL09, CL10)

AC/DC Voltage	†Coil Suffix
24-28	D
42-48	F
110-127	J
220-250	N
380-415	U
440-500	Y



IEC Power Devices

IEC Contactors Accessories

C-2000

Section 5

Front-Mount Auxiliary Contact Blocks

Front-mount auxiliary contact blocks clip onto front face of contactor.
Contact Rating: A600, Q600.

For Use With	Terminal Type	Contact Configuration	Product Number
CL Contactors	Standard	1NO	BCLF10
CL Contactors	Standard	1NC	BCLF01
CL Contactors	Standard	1NO	BCLF10G ¹
CL Contactors	Standard	1NC	BCLF01G ¹
CL Contactors	Ring	1NO	BCRF10
CL Contactors	Ring	1NC	BCRF01

¹Overlapping contacts.

Side-Mount Auxiliary Contact Blocks

Side-mount auxiliary contact blocks can be mounted on either left or right sides of contactor. Positive displacement contacts are designed to prevent simultaneous closing of NO and NC contacts to avoid overlapping between opposing functions. Contact Rating: A600, Q600.

For Use With	Terminal Type	Type	Contact Configuration	Product Number
CL/CK Contactors	Standard	Base Block	1NO-1NC	BCLL11
CL/CK Contactors	Standard	Base Block	2NO	BCLL20
CL/CK Contactors	Standard	Adder Block	1NO-1NC	BRLL11
CL/CK Contactors	Standard	Adder Block	2NO	BRLL20

Mechanical Interlock

Mechanical interlocks, used for horizontal interlocking of two contactors mounted side-by-side, prevent the closing of one contactor (as long as the other remains closed). BEL02 includes two built-in NC contacts. Contact Rating: A600, Q600.

For Use With	Product Number
5-75 Hp contactors (All CL Contactors)	BEL02
100-500 Hp contactors (All CK Contactors)	BEKH

Pneumatic Timer

Pneumatic timers are adjustable time-delayed auxiliary contacts. They come equipped with two time-delayed contacts: 1NO and 1NC, electrically separated. Setting is scaled over a 350° rotation by means of a knurled knob with timing guide marks. To mount a pneumatic timer, simply clip it on front face of contactor. Contact Rating: A600, Q600.

For Use With	Terminal Type	Type	Time range	Contact Configuration	Product Number
CL Contactors	Standard	Time Delay On	1-30 sec	1NO-1NC	BTLF30C
CL Contactors	Standard	Time Delay On	1-60 sec	1NO-1NC	BTLF60C
CL Contactors	Standard	Time Delay Off	1-30 sec	1NO-1NC	BTLF30D
CL Contactors	Standard	Time Delay Off	1-60 sec	1NO-1NC	BTLF60D
CL Contactors	Ring	Time Delay On	1-30 sec	1NO-1NC	BTRF30C
CL Contactors	Ring	Time Delay On	1-60 sec	1NO-1NC	BTRF60C
CL Contactors	Ring	Time Delay Off	1-30 sec	1NO-1NC	BTRF30D
CL Contactors	Ring	Time Delay Off	1-60 sec	1NO-1NC	BTRF60D

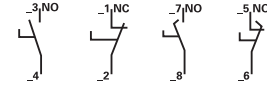
Electronic Timers

Time-on delay and time-off delay modules for sequencing control of contactors. They deliver high repeatability, ±3% in ambient temperatures from 32° to 104°F. A red LED provides indication during time-delay operation.

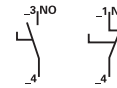
For Use With	Type	Time-Delay Range	Product Number
CL00-CL10 with ac coils 24-250 V	On delay	0.1-2 s	BETL02C
CL00-CL10 with dc coils 24-250 V	On delay	1.5-45 s	BETL45C
CL00-CL10 with ac coils 24-250 V	Off delay	0.1-2 s	BETL02D
CL00-CL10 with dc coils 24-250 V	Off delay	1.5-45 s	BETL45D



Front-Mounted Block



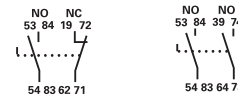
BCLF10/BCLF01/BCLF10G/BCLF01G



BCRF10/BCRF01



Side-Mounted Block



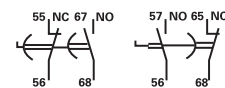
BRLL11/BRLL20



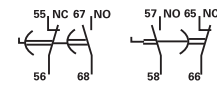
Mechanical Interlock



Pneumatic Timer



BTRF30C/BTRF60C/BTRF30D/BTRF60D



BTLF30C/BTLF60C BTLF30D/BTLF60D



Electronic Timer



IEC Power Devices

IEC Contactors Accessories

C-2000

Section 5

Surge Suppressor

For suppression of disturbances in circuit voltage occurring upon opening of the contactor. Mounts directly on the top of the coil.

Note: Surge suppression is built into CK electronic coil module.

For Use With	Surge Suppressor Type	Voltage	Product Number
CL00, CL01, CL02, CL25, CL04, CL45	RC	24-48 VAC	BSLR2G
CL00, CL01, CL02, CL25, CL04, CL45	RC	50-127 VAC	BSLR2K
CL00, CL01, CL02, CL25, CL04, CL45	RC	130-240 VAC	BSLR2R
CL06, CL07, CL08, CL09, CL10	RC	24-48 VAC	BSLR3G
CL06, CL07, CL08, CL09, CL10	RC	50-127 VAC	BSLR3K
CL06, CL07, CL08, CL09, CL10	RC	130-240 VAC	BSLR3R
All CL contactors	Diode	12-600 VDC	BSLDZ
All CL contactors	Varistor	24-48 VAC, DC	BSLV3G
All CL contactors	Varistor	50-127 VAC, DC	BSLV3K
All CL contactors	Varistor	130-250 VAC, DC	BSLV3R
All CL contactors	Varistor	380-500 VAC, DC	BSLV3U

Amplifier

Provides for low level signals (24 VDC) to operate contactor while control coils operate at the line voltage. Two forms are available: a panel-mount form (for CK contactors) and a side-mount form (for CL contactors).

For Use With	Product Number	GO Schedule
CL Contactors	CLXA01	GO-10C2
CK Contactors	CR305X112P	GO-10G

Mechanical Latch Block

Mechanical latch block is used to convert a standard contactor into a latched contactor. Easy to mount, it clips onto front face of contactor. Contact Rating: A600, Q600.

For Use With	Voltage Application	Release Voltage Range	Product Number
All CL Contactors	50/60 Hz and DC	24-32	RMLFD
All CL Contactors	50/60 Hz and DC	42-48	RMLFG
All CL Contactors	50/60 Hz and DC	110-125	RMLFJ
All CL Contactors	50/60 Hz and DC	208-277	RMLFN
All CL Contactors	50/60 Hz and DC	380-480	RMLFU
All CL Contactors	50/60 Hz and DC	500-600	RMLFY

Unlatching coil is rated for intermittent duty. The latch block features an integral coil contact to clear the circuit after unlatching.

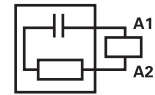
References

Instructions

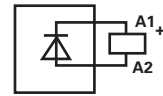
GEH-5517 Amplifier CLXA01



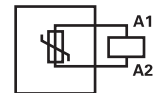
Surge Suppressor



BSLR __RC



BSLDZ Diode



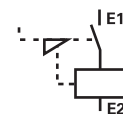
BSLV __Varistor



Amplifier



Mechanical Latch Block



RMLF



IEC Power Devices

IEC Contactors Accessories

C-2000

Section 5

These modules add flexibility to C-2000 contactors and relays, providing time-delay functions, an interface for low voltage PLC applications or contactor-mounted manual-auto functions. Easily installed, these modules plug right into the contactor coil terminals. All modules include a status indicating LED and accept plug-in voltage surge suppressors.

Interface Modules

Interface modules allow contactor operation from 24 Volt or 48 Volt sources (such as a PLC output). Current consumption is 15 mA @ 24 Vdc and 25 mA @ 48 Vdc. A red LED provides indication when voltage is applied to E1-E2.

For Use With	Input voltage	Type	Product Number
CL00-CL10 with ac coils 24-250 V CL00-CL45 with dc coils 24-250 V	24 VDC	Relay	IMRD
CL00-CL10 with ac coils 24-250 V CL00-CL45 with dc coils 24-250 V	48 VDC	Relay	IMRG
CL00-CL10 with ac coils 24-250 V CL00-CL45 with dc coils 24-250 V	24 VDC	Relay with manual override switch	IMRFD
CL00-CL10 with ac coils 24-250 V CL00-CL45 with dc coils 24-250 V	48 VDC	Relay with manual override switch	IMRFG
CL00-CL10 with ac coils 24-250 V CL00-CL10 with dc coils 24-250 V	5-30 VDC	Solid State (optical isolation)	IMSSD



Interface Module

Auto-Manual-Stop Modules

Auto-Manual-Stop modules allow local and/or remote operation of the contactor coil. The Auto-Manual switch selects the input connected to the coil circuit—A1 for automatic or remote operation, B1 for local operation. In both connections, the manual On-Off switch is in series and controls power to the coil. Auto-Manual can be switched only when the On-Off switch is in the Off position. A red LED provides indication when the coil is energized.

For Use With	Product Number
CL00-CL10 with ac coils 24-250 V CL00-CL45 with dc coils 24-250 V	IMAMS



Auto-Manual-Stop Module

Voltage Surge Suppressors

Voltage surge suppressors plug into timer, interface, or auto-stop-manual modules.

Contactors Size	Coil Voltage	Surge Suppressor Type	Product Number
CL00A-CL45A	24-48 VAC	Resistive/Capacitive (R/C)	IMRC2G
CL00A-CL45A	50-127 VAC	Resistive/Capacitive (R/C)	IMRC2K
CL00A-CL45A	130-240 VAC	Resistive/Capacitive (R/C)	IMRC2R
CL05A-CL10A	24-48 VAC	Resistive/Capacitive (R/C)	IMRC3G
CL05A-CL10A	50-127 VAC	Resistive/Capacitive (R/C)	IMRC3K
CL05A-CL10A	130-240 VAC	Resistive/Capacitive (R/C)	IMRC3R
CL00D-CL45D	24-250 VAC	Diode	IMD1Z
CL00-CL10	24-48 VAC or DC	Varistor	IMV3G
CL00-CL10	50-127 VAC or DC	Varistor	IMV3K
CL00-CL10	130-240 VAC or DC	Varistor	IMV3R



Voltage Surge Suppressor



IEC Power Devices

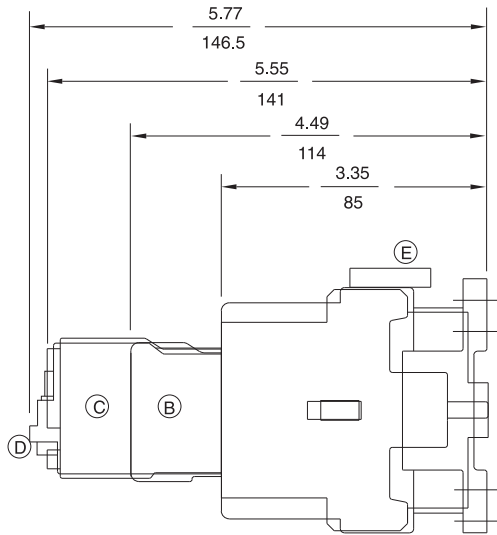
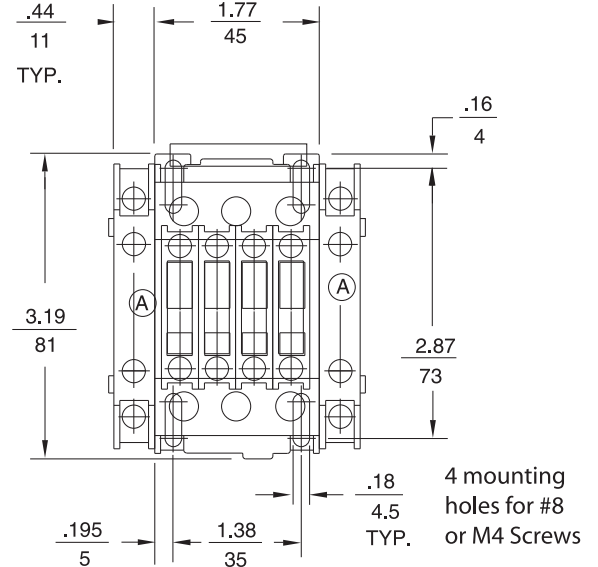
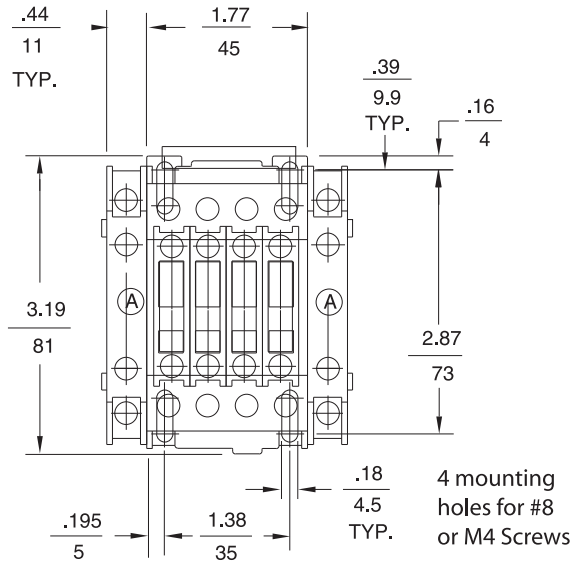
IEC Contactors Dimensions

C-2000

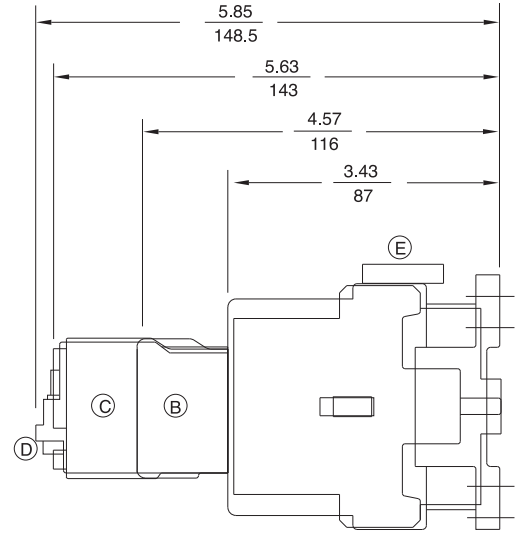
Section 5

Outlines and Dimensions ($\frac{in}{mm}$) For Estimating Only

Contactor Front View and AC Contactor Side View



CL00A310T, CL01A310T, CL02A310T and RL4 Relays



CL25A310T*

Legend and Notes

- A Extra Auxiliary Contacts, Side Mounted (if used)
 - B Extra Auxiliary Contacts, Front Mounted (if used)
 - C Pneumatic Timer (if used)
 - D Mechanical Latch (if used)
 - E Transient Voltage Suppressor
- Add 1/2 inch for electrical clearance to enclosure.



IEC Power Devices

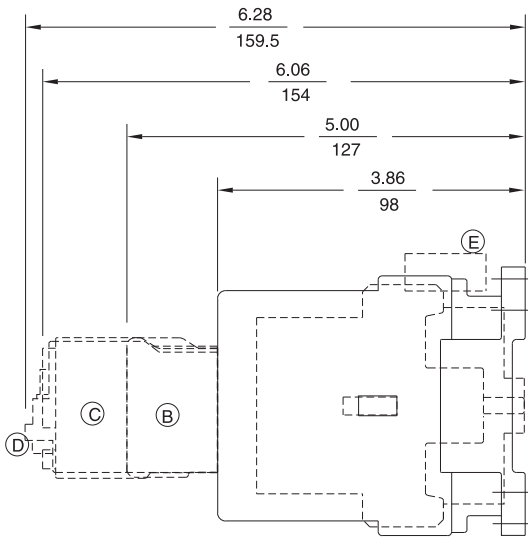
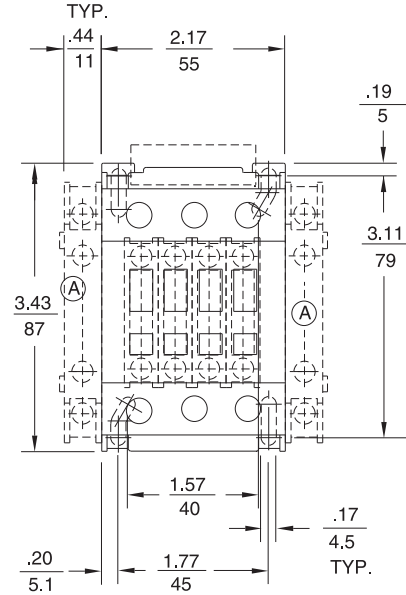
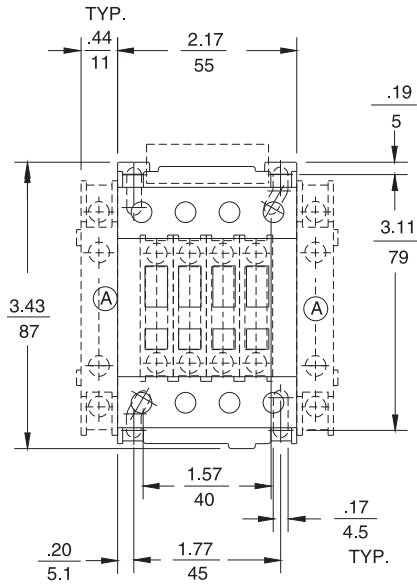
IEC Contactors Dimensions

C-2000

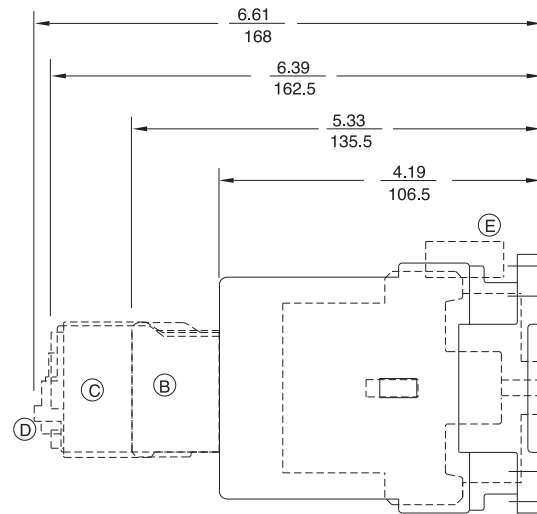
Section 5

Outlines and Dimensions ($\frac{\text{in}}{\text{mm}}$) For Estimating Only

Contactor Front View and AC Contactor Side View



CL04A310M*



CL45A310M*

Legend and Notes

- A Extra Auxiliary Contacts, Side Mounted (if used)
 - B Extra Auxiliary Contacts, Front Mounted (if used)
 - C Pneumatic Timer (if used)
 - D Mechanical Latch (if used)
 - E Transient Voltage Suppressor
- Add 1/2 inch for electrical clearance to enclosure.



IEC Power Devices

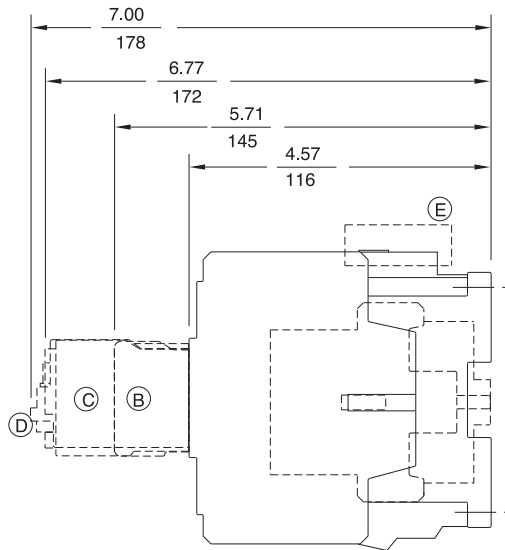
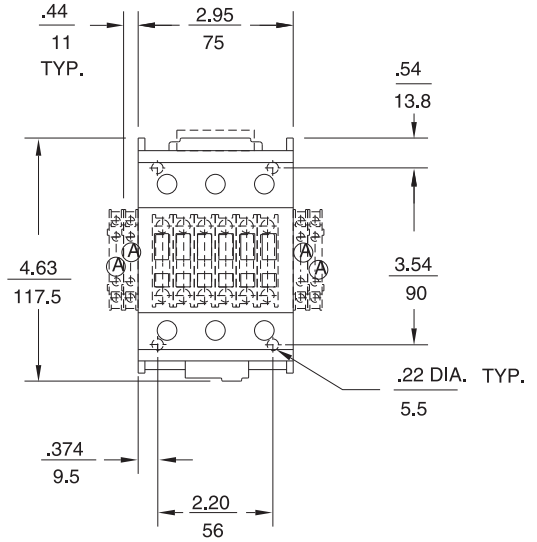
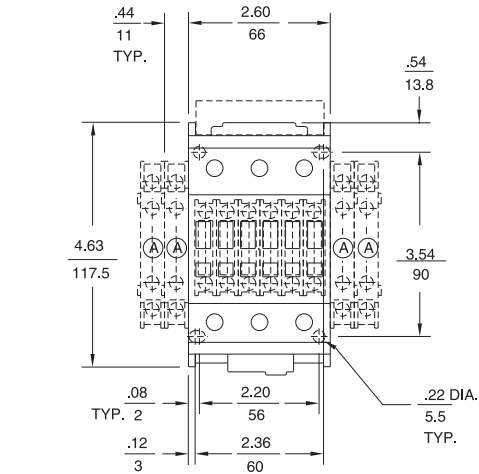
IEC Contactors Dimensions

C-2000

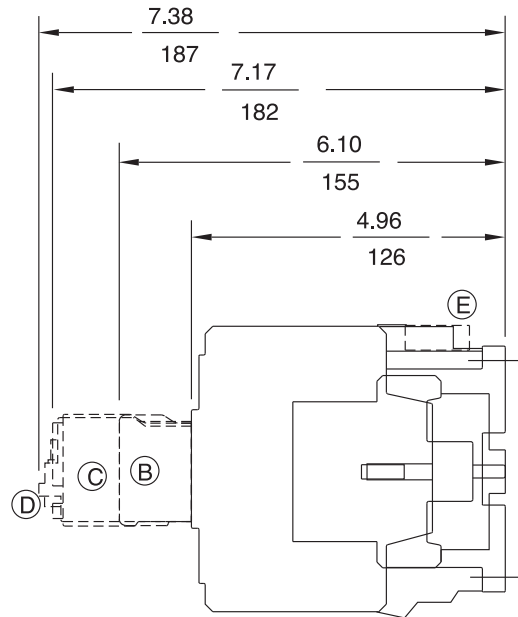
Section 5

Outlines and Dimensions (in mm) For Estimating Only

Contactor Front View and AC Contactor Side View



CL06A311M*, CL07A311M*, CL08A311M*



CL09A311M*, CL10A311M*

Legend and Notes

- A Extra Auxiliary Contacts, Side Mounted (if used)
 - B Extra Auxiliary Contacts, Front Mounted (if used)
 - C Pneumatic Timer (if used)
 - D Mechanical Latch (if used)
 - E Transient Voltage Suppressor
- Add 1/2 inch for electrical clearance to enclosure.



IEC Power Devices

IEC Contactors Thermal Overload Relays

C-2000

Overload Relays

Fixed Heater

C2000 RT overload relays provide motor overload protection through fixed bimetal heaters. These relays are ambient compensated and utilize a differential mechanism for single-phase sensitivity. The trip setting is adjustable for the range listed.

Overload relays may be set for 4 different operational modes—manual reset only, automatic reset only, manual reset/stop, or automatic reset/stop. Stop is initiated by pushing the reset button which interrupts the holding circuit in the latter two listed modes.

Overload relays feature visible trip indication, reset on the upstroke, weld check, and trip test.

Reference Publications

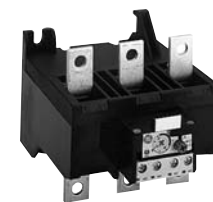
Instructions	
GEH-6237	RT1* (Class 10) Overload
DEH-040	RT12* (Class 20) Overload
GEH-6238	RT2* (Class 10) Overload
DEH-041	RT22* (Class 20) Overload
GEH-6239	RT3* (Class 10) Overload
DEH-042	RT32* (Class 20) Overload
GEH-6240	RT4* (Class 10, 30) Overload
GEH-6241	RT5* (Class 10, 30) Overload
GEH-5520	RT5 Overload Connection Kit
DEH-055	Remote Electrical Reset



RT1 Overload Relay



RT2 Overload Relay



RT3 Overload Relay



RT4 Overload Relay



RT5 Overload Relay



IEC Power Devices

IEC Contactors Thermal Overload Relays

C-2000

Section 5

RT1 - Direct Mount Manual

Overload Relay for use with Contactors ¹	Current Range Amps (min-max)	Reset Type	Trip Class	Maximum Fuse Rating Amps	Maximum Circuit Breaker Rating Amps	Product Number
CL00, CL01, CL02, CL25, CL04, CL45	0.16-0.26	Manual	Class 10	1	15	RTN1B
CL00, CL01, CL02, CL25, CL04, CL45	0.25-0.41	Manual	Class 10	1	15	RTN1C
CL00, CL01, CL02, CL25, CL04, CL45	0.4-0.65	Manual	Class 10	3	15	RTN1D
CL00, CL01, CL02, CL25, CL04, CL45	0.65-1.1	Manual	Class 10	6	15	RTN1F
CL00, CL01, CL02, CL25, CL04, CL45	1-1.5	Manual	Class 10	6	15	RTN1G
CL00, CL01, CL02, CL25, CL04, CL45	1.3-1.9	Manual	Class 10	6	15	RTN1H
CL00, CL01, CL02, CL25, CL04, CL45	1.8-2.7	Manual	Class 10	10	15	RTN1J
CL00, CL01, CL02, CL25, CL04, CL45	2.5-4.1	Manual	Class 10	15	15	RTN1K
CL00, CL01, CL02, CL25, CL04, CL45	4-6.3	Manual	Class 10	20	15	RTN1L
CL00, CL01, CL02, CL25, CL04, CL45	5.5-8.5	Manual	Class 10	25	15	RTN1M
CL00, CL01, CL02, CL25, CL04, CL45	8.0-12.0	Manual	Class 10	40	30	RTN1N
CL01, CL02, CL25, CL04, CL45	10.0-16.0	Manual	Class 10	50	35	RTN1P
CL02, CL25, CL04, CL45	14.5-18	Manual	Class 10	60	40	RTN1S
CL25, CL04, CL45	17.5-22	Manual	Class 10	70	50	RTN1T
CL04, CL45	21-26	Manual	Class 10	80	60	RTN1U
CL04, CL45	25-32	Manual	Class 10	100	80	RTN1V
CL45	30-40	Manual	Class 10	100	80	RTN1W

RT1 - Direct Mount Manual/Auto

Overload Relay for use with Contactors ¹	Current Range Amps (min-max)	Reset Type	Trip Class	Maximum Fuse Rating Amps	Maximum Circuit Breaker Rating Amps	Product Number
CL00, CL01, CL02, CL25, CL04, CL45	0.16-0.26	Manual/Auto w/wo stop	Class 10	1	15	RT1B
CL00, CL01, CL02, CL25, CL04, CL45	0.25-0.41	Manual/Auto w/wo stop	Class 10	1	15	RT1C
CL00, CL01, CL02, CL25, CL04, CL45	0.4-0.65	Manual/Auto w/wo stop	Class 10	3	15	RT1D
CL00, CL01, CL02, CL25, CL04, CL45	0.65-1.1	Manual/Auto w/wo stop	Class 10	6	15	RT1F
CL00, CL01, CL02, CL25, CL04, CL45	1-1.5	Manual/Auto w/wo stop	Class 10	6	15	RT1G
CL00, CL01, CL02, CL25, CL04, CL45	1.3-1.9	Manual/Auto w/wo stop	Class 10	6	15	RT1H
CL00, CL01, CL02, CL25, CL04, CL45	1.8-2.7	Manual/Auto w/wo stop	Class 10	10	15	RT1J
CL00, CL01, CL02, CL25, CL04, CL45	2.5-4.1	Manual/Auto w/wo stop	Class 10	15	15	RT1K
CL00, CL01, CL02, CL25, CL04, CL45	4-6.3	Manual/Auto w/wo stop	Class 10	20	15	RT1L
CL00, CL01, CL02, CL25, CL04, CL45	5.5-8.5	Manual/Auto w/wo stop	Class 10	25	15	RT1M
CL00, CL01, CL02, CL25, CL04, CL45	8.0-12.0	Manual/Auto w/wo stop	Class 10	40	30	RT1N
CL01, CL02, CL25, CL04, CL45	10.0-16.0	Manual/Auto w/wo stop	Class 10	50	35	RT1P
CL02, CL25, CL04, CL45	14.5-18	Manual/Auto w/wo stop	Class 10	60	40	RT1S
CL25, CL04, CL45	17.5-22	Manual/Auto w/wo stop	Class 10	70	50	RT1T
CL04, CL45	21-26	Manual/Auto w/wo stop	Class 10	80	60	RT1U
CL04, CL45	25-32	Manual/Auto w/wo stop	Class 10	100	80	RT1V
CL45	30-40	Manual/Auto w/wo stop	Class 10	100	80	RT1W
CL00, CL01, CL02, CL25, CL04, CL45	0.4-0.65	Manual/Auto w/wo stop	Class 20	3	15	RT12D
CL00, CL01, CL02, CL25, CL04, CL45	0.65-1.1	Manual/Auto w/wo stop	Class 20	6	15	RT12F
CL00, CL01, CL02, CL25, CL04, CL45	1-1.5	Manual/Auto w/wo stop	Class 20	6	15	RT12G
CL00, CL01, CL02, CL25, CL04, CL45	1.3-1.9	Manual/Auto w/wo stop	Class 20	6	15	RT12H
CL00, CL01, CL02, CL25, CL04, CL45	2.5-4.1	Manual/Auto w/wo stop	Class 20	15	15	RT12K
CL00, CL01, CL02, CL25, CL04, CL45	4-6.3	Manual/Auto w/wo stop	Class 20	20	15	RT12L
CL00, CL01, CL02, CL25, CL04, CL45	5.5-8.5	Manual/Auto w/wo stop	Class 20	25	15	RT12M
CL00, CL01, CL02, CL25, CL04, CL45	8.0-12.0	Manual/Auto w/wo stop	Class 20	40	30	RT12N
CL01, CL02, CL25, CL04, CL45	10.0-16.0	Manual/Auto w/wo stop	Class 20	50	35	RT12P
CL02, CL25, CL04, CL45	14.5-18	Manual/Auto w/wo stop	Class 20	60	40	RT12S
CL25, CL04, CL45	17.5-22	Manual/Auto w/wo stop	Class 20	70	50	RT12T
CL04, CL45	21-26	Manual/Auto w/wo stop	Class 20	80	60	RT12U
CL04, CL45	25-32	Manual/Auto w/wo stop	Class 20	100	80	RT12V
CL45	30-40	Manual/Auto w/wo stop	Class 20	100	80	RT12W

¹Do not exceed contactor current rating when selecting and adjusting overload relays. For panel mount use base adapter RTXP.



IEC Power Devices

IEC Contactors Thermal Overload Relays

C-2000

Section 5

RT2 - Direct Mount Manual

Overload Relay for use with Contactors ¹	Current Range Amps (min-max)	Reset Type	Trip Class	Maximum Fuse Rating Amps	Maximum Circuit Breaker Rating Amps	Product Number
CL06, CL07, CL08, CL09, CL10	11.5-15	Manual	Class 10	35	25	RTN2A
CL06, CL07, CL08, CL09, CL10	14.5-19	Manual	Class 10	50	45	RTN2B
CL06, CL07, CL08, CL09, CL10	18.5-25	Manual	Class 10	70	60	RTN2C
CL06, CL07, CL08, CL09, CL10	24-32	Manual	Class 10	90	80	RTN2D
CL06, CL07, CL08, CL09, CL10	30-43	Manual	Class 10	100	100	RTN2E
CL06, CL07, CL08, CL09, CL10	42-55	Manual	Class 10	150	125	RTN2G
CL07, CL08, CL09, CL10	54-65	Manual	Class 10	175	150	RTN2H
CL08, CL09, CL10	64-82	Manual	Class 10	225	200	RTN2J
CL10	78-97	Manual	Class 10	225	225	RTN2L
CL10	90-110	Manual	Class 10	225	250	RTN2M

RT2 - Direct Mount Manual/Auto

Overload Relay for use with Contactors ¹	Current Range Amps (min-max)	Reset Type	Trip Class	Maximum Fuse Rating Amps	Maximum Circuit Breaker Rating Amps	Product Number
CL06, CL07, CL08, CL09, CL10	11.5-15	Manual/Auto w/wo stop	Class 10	35	25	RT2A
CL06, CL07, CL08, CL09, CL10	18.5-25	Manual/Auto w/wo stop	Class 10	70	60	RT2C
CL06, CL07, CL08, CL09, CL10	14.5-19	Manual/Auto w/wo stop	Class 10	50	45	RT2B
CL06, CL07, CL08, CL09, CL10	24-32	Manual/Auto w/wo stop	Class 10	90	80	RT2D
CL06, CL07, CL08, CL09, CL10	30-43	Manual/Auto w/wo stop	Class 10	100	100	RT2E
CL06, CL07, CL08, CL09, CL10	42-55	Manual/Auto w/wo stop	Class 10	150	125	RT2G
CL07, CL08, CL09, CL10	54-65	Manual/Auto w/wo stop	Class 10	175	150	RT2H
CL08, CL09, CL10	64-82	Manual/Auto w/wo stop	Class 10	225	200	RT2J
CL10	78-97	Manual/Auto w/wo stop	Class 10	225	225	RT2L
CL10	90-110	Manual/Auto w/wo stop	Class 10	225	250	RT2M
CL06, CL07, CL08, CL09, CL10	24-32	Manual/Auto w/wo stop	Class 20	90	80	RT22D
CL06, CL07, CL08, CL09, CL10	30-43	Manual/Auto w/wo stop	Class 20	100	100	RT22E
CL06, CL07, CL08, CL09, CL10	42-55	Manual/Auto w/wo stop	Class 20	150	125	RT22G
CL07, CL08, CL09, CL10	54-65	Manual/Auto w/wo stop	Class 20	175	150	RT22H
CL08, CL09, CL10	64-82	Manual/Auto w/wo stop	Class 20	225	200	RT22J
CL10	78-97	Manual/Auto w/wo stop	Class 20	225	225	RT22L
CL10	90-110	Manual/Auto w/wo stop	Class 20	225	250	RT22M

¹Do not exceed contactor current rating when selecting and adjusting overload relays. For panel mount use base adapter RT2XP.

